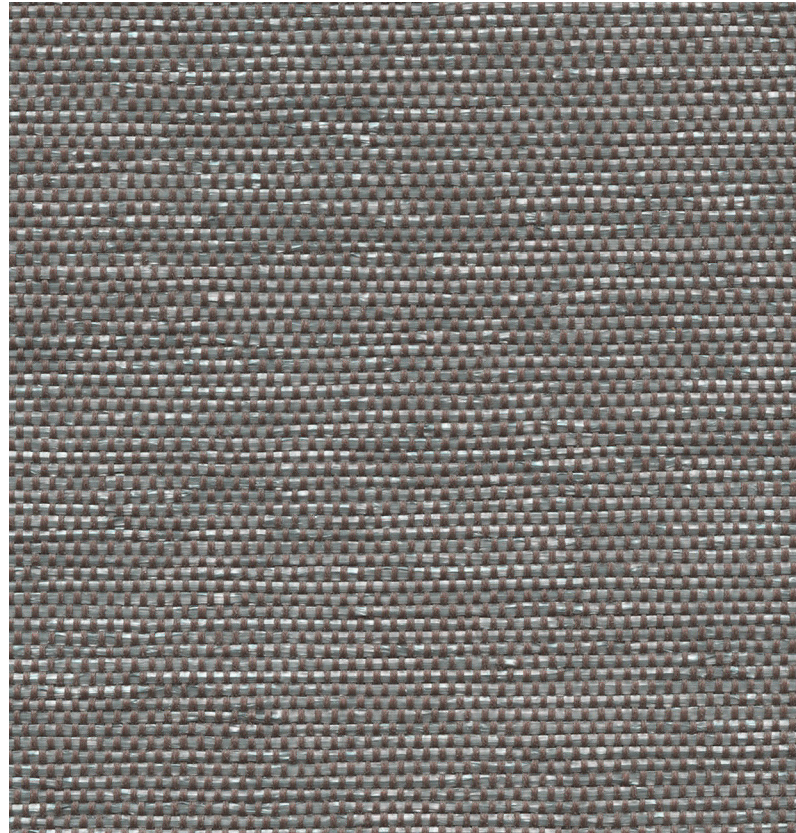


BLEACH CLEANABLE

Studio 54 2966

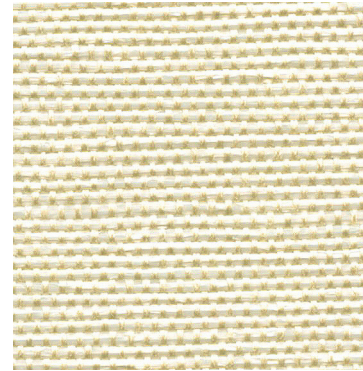
PANEL | ACOUSTIC



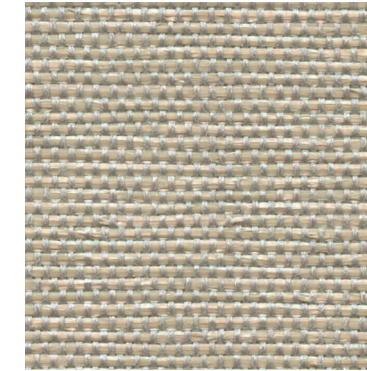
Gloria
7020



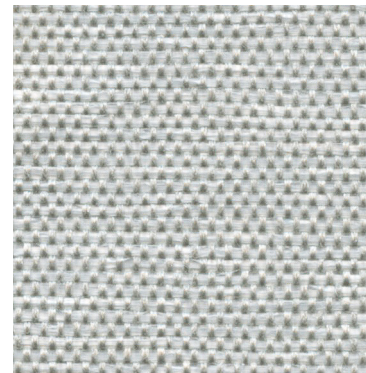
Stardust
7051



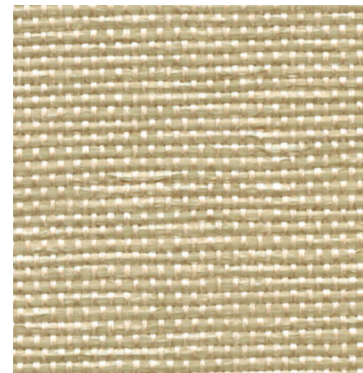
Disco
7030



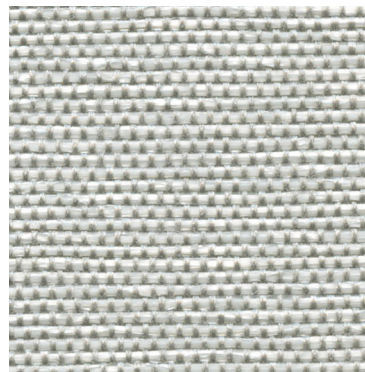
Ross
7044



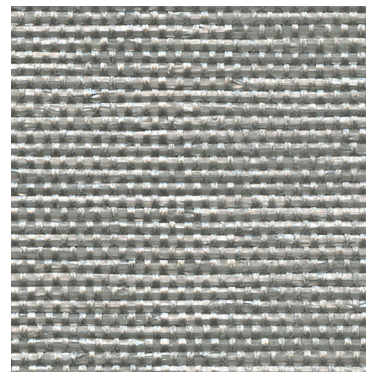
Glam
7040



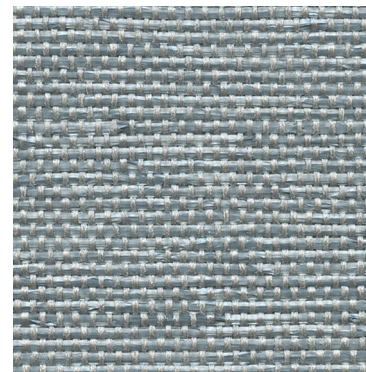
Hustle
7032



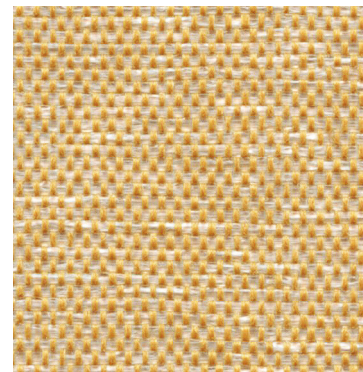
Shimmer
7041



Celebrity
7045



Flashy
7043



Stayin' Alive
7010

Studio 54 2966

Specifications

Content	100% polypropylene
Weight	12.8 ± 1.0 oz./lin. yd.
Width	66" min. useable
Repeat	.1" vertical none horizontal
Treatment	polyester binder

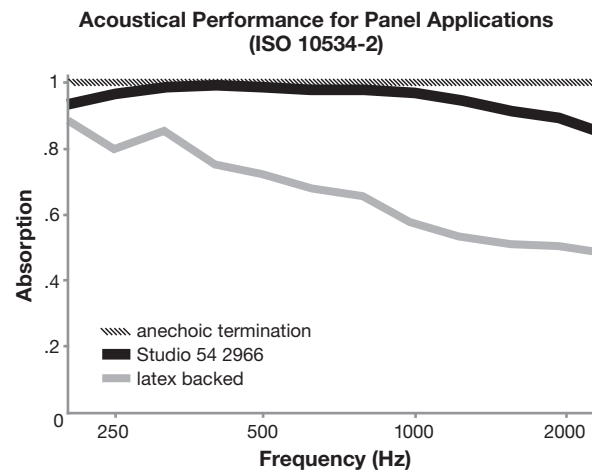
Cleaning Code

Standard Care Label W-S. Clean with water based cleaning agents, foam or pure, water free solvents. Vacuuming or light brushing is recommended to prevent dust and soil buildup.

Bleach Cleanable - May be cleaned with a 10% bleach-to-water solution. Rinse well after cleaning. May also be disinfected with hydrogen peroxide, alcohol, and quaternary ammonium (quat) based cleaners.


Acoustical Performance


The plot below summarizes impedance tube measurements of absorption of an anechoic termination and various fabrics in front of the anechoic termination.





NRC of anechoic termination	1.00
NRC of fabric in front of anechoic termination	.95

Performance

-  Colorfastness to Light (AATCC 16.3 Option 3)
Grade 4 min. at 40 hours

-  Colorfastness to Crocking (AATCC 8)
Grade 4 min. dry & Grade 3 min. wet

-  Breaking Strength (ASTM D5034)
100 lbf min. warp and 250 lbf min. fill

-  ^{*} Flammability (ASTM E84)
Class I or A

Miscellaneous

Proudly woven in North America supporting our local communities.

Variation in texture and luster, due to the manufacturing process, is to be expected and is part of the inherent beauty of Studio 54.

Application testing of this product is recommended. Colors may vary between dye lots. This is a directional fabric.

Visit guilfordofmaine.com for samples.

*Certification Marks owned by the Association for Contract Textiles, Inc.