

Sedona 2942

CUBICLE

CUBICLE

Sedona 2942



Cactus
9021



Desert
9020



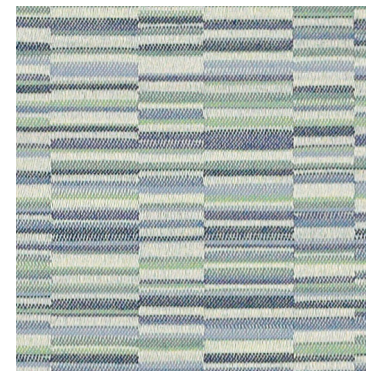
Grass
9013



Sky
9010



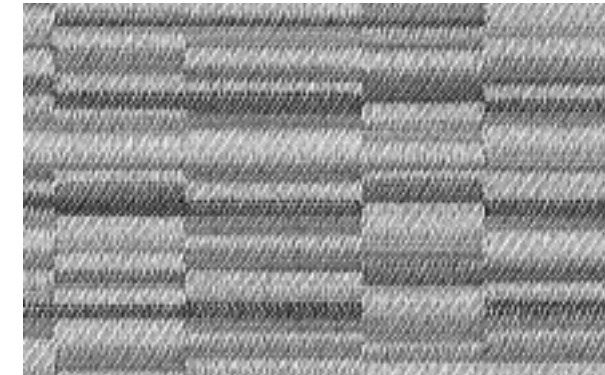
Sand
9012



Haze
9011

Please order a memo sample to view full scale pattern.

Actual Size




Specifications


Content	100% FR polyester
Weight	13.7 ± 1.0 oz./lin. yd.
Width	72" min. useable
Repeat	17.9" vertical 9.4" horizontal
Treatment	FR antimicrobial


Cleaning Code

Standard Care Label W-S. Commercial wash at 160°F maximum wash temperature using detergents recommended for the type of washing machines being used, no chlorine bleach. Rinse warm. Do not overload the washer as this may result in inadequate cleansing of the fabric and excessive wrinkling. Dry on synthetic (cool) setting until slightly damp or just dry. Do not overload the dryer. Over-drying or drying at hot temperatures may cause unacceptable shrinkage to occur. If necessary, press with a cool iron ("polyester" or "synthetics" setting, max temp 275° F).


Performance

-  Colorfastness to Light (AATCC 16 Option 3)
Grade 4 min. at 60 hours

-  Colorfastness to Crocking (AATCC 8)
Grade 4 min. dry & Grade 3 min. wet

-  Breaking Strength (ASTM D5034)
200 lbf min. warp and 100 lbf min. fill

- Seam Slippage (ASTM D4034)
60 lbf min. warp and fill

-  Flammability
NFPA 701 TM#1 - Pass

*ACT® registered certification marks.

Miscellaneous

Every effort has been made to ensure color accuracy of the digital images, however, please order a sample before specification. Application testing of this product is recommended. Colors may vary between dye lots. This is a directional fabric.

Proudly woven in the USA supporting our local communities.

Visit guilfordofmaine.com for samples.