

Crosstown 2526

PANEL | ACOUSTIC

PANEL | ACOUSTIC

Crosstown 2526

Specifications

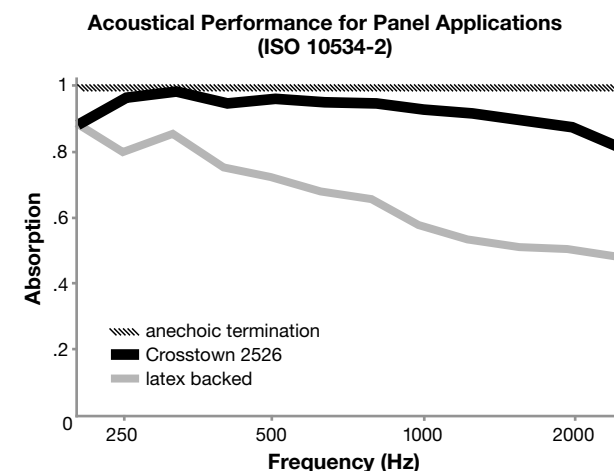
Content	77% pre-consumer recycled polyester 23% post-consumer recycled polyester
Weight	13.6 ± 1.0 oz./lin. yd.
Width	66" min. useable
Repeat	12.5" vertical 16.2" horizontal

Cleaning Code

Standard Care Label W-S. Clean with water based cleaning agents, foam or pure, water free solvents. Vacuuming or light brushing is recommended to prevent dust and soil buildup. May also be disinfected with hydrogen peroxide, alcohol, and quaternary ammonium (quat) based cleaners.


Acoustical Performance


The plot below summarizes impedance tube measurements of absorption of an anechoic termination and various fabrics in front of the anechoic termination.





NRC of anechoic termination	1.00
NRC of fabric in front of anechoic termination	.95

Performance



-  Colorfastness to Light (AATCC 16.3 Option 3)
Grade 4 min. at 40 hours

-  Colorfastness to Crocking (AATCC 8)
Grade 4 min. dry & Grade 3 min. wet

-  Breaking Strength (ASTM D5034)
250 lbf min. warp and 150 lbf min. fill

-  Flammability (ASTM E84)
Class I or A

Sustainability

-  **100% recycled and recyclable**
Terratek is a registered trademark of Duvaltex
-  **facts[™] Silver**

Miscellaneous

Proudly woven in North America supporting our local communities.

Application testing of this product is recommended. Colors may vary between dye lots. This is a directional fabric.

Visit guilfordofmaine.com for samples.

 This pattern is included in the underwriters laboratory panel fabric recognition program. Additional testing of this U.L. recognized component fabric is not required on approved panels from participating manufacturers.

*Certification Marks owned by the Association for Contract Textiles, Inc.



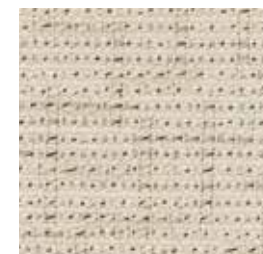
Buff
080



Cement
010



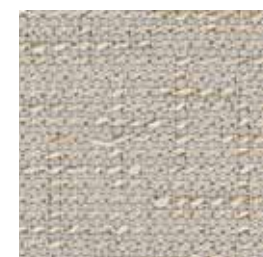
Graphite
021



Birch
031



Ray
030



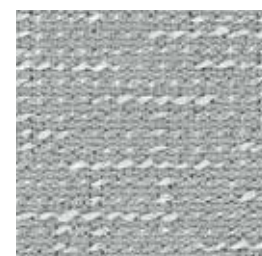
Stucco
070



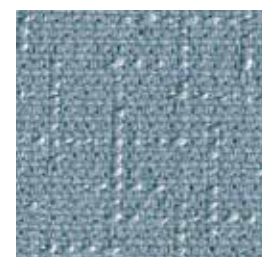
Mystic
020



Fieldstone
060



Sterling
061



Waterfront
040