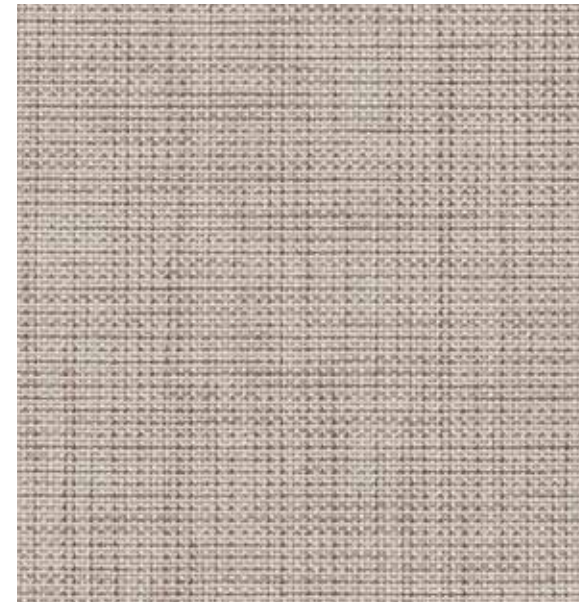


Off the Grid 1233

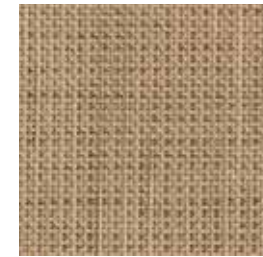
PANEL | ACOUSTIC

PANEL | ACOUSTIC

Off the Grid 1233



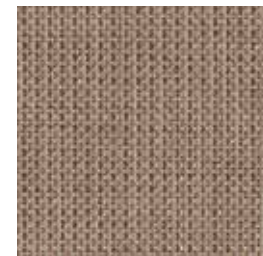
Steam
1307



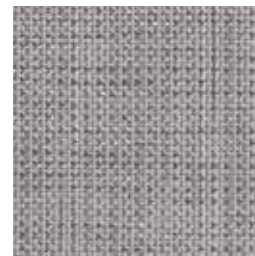
Woodchip
1301



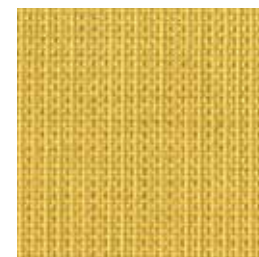
Thermal
1306



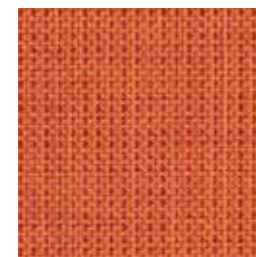
Fossil
1304



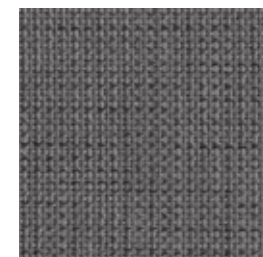
Lava
1305



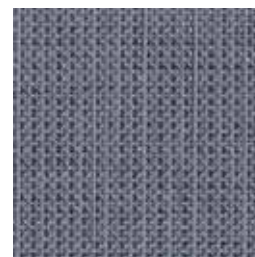
Solar
1313



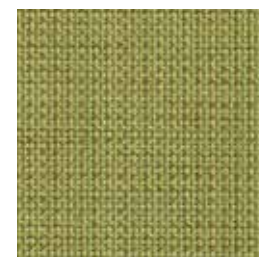
Earthglow
1309



Coal
1302



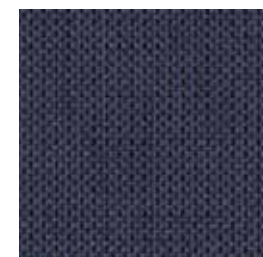
Hydro
1303



Flora
1312



Flame
1310



Tidal
1311

Specifications

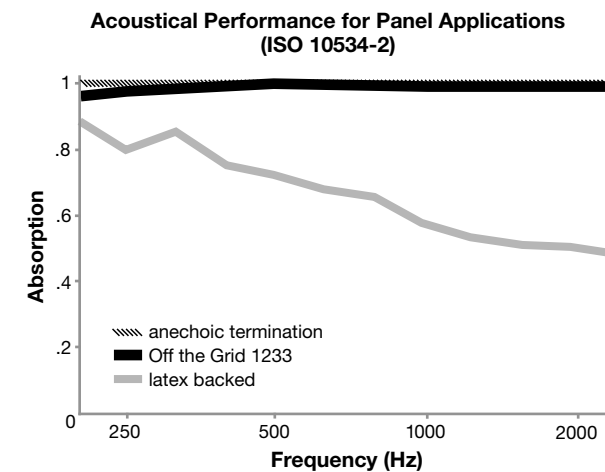
Content	49% pre-consumer recycled polyester 38% post-consumer recycled polyester 13% polyester
Weight	10.0 ± 1.0 oz./lin. yd.
Width	66" min. useable
Repeat	none
Treatment	polyester binder

Cleaning Code

Standard Care Label W-S. Clean with water based cleaning agents, foam or pure, water free solvents. Vacuuming or light brushing is recommended to prevent dust and soil buildup. May also be disinfected with hydrogen peroxide, alcohol, and quaternary ammonium (quat) based cleaners.

Acoustical Performance

The plot below summarizes impedance tube measurements of absorption of an anechoic termination and various fabrics in front of the anechoic termination.



NRC of anechoic termination	1.00
NRC of fabric in front of anechoic termination	1.00

Performance

- Colorfastness to Light (AATCC 16.3 Option 3)
Grade 4 min. at 40 hours
- Colorfastness to Crocking (AATCC 8)
Grade 4 min. dry & Grade 3 min. wet
- Breaking Strength (ASTM D5034)
185 lbf warp and 165 lbf fill
- Flammability (ASTM E84)
Class I or A

Sustainability



Miscellaneous

Proudly woven in North America supporting our local communities.

Application testing of this product is recommended. Colors may vary between dye lots. This is a directional fabric.

Visit guilfordofmaine.com for samples.

This pattern is included in the underwriters laboratory panel fabric recognition program. Additional testing of this U.L. recognized component fabric is not required on approved panels from participating manufacturers.

*Certification Marks owned by the Association for Contract Textiles, Inc.

† Not available in USA