

Panel | Acoustic  
Resolve 1301

Bleach Cleanable



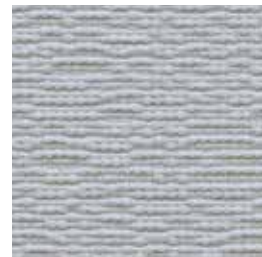
Zeal  
1207



Courage  
1201



Clarify  
1202



Effect  
1203



Manage  
1204



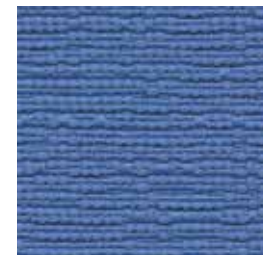
Bold  
1199



Earnest  
1194



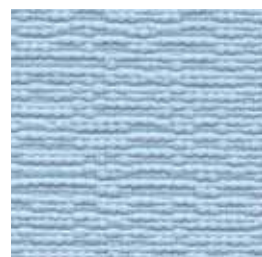
Decide  
1195



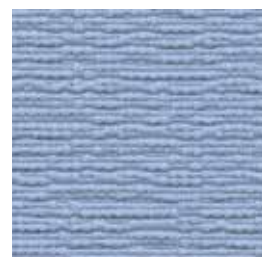
Plan  
1198



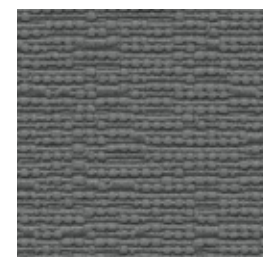
Explain  
1200



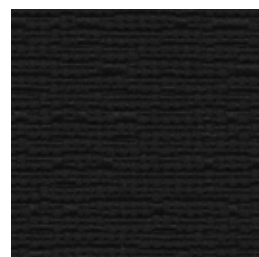
Intention  
1196



Attain  
1197



Fortitude  
1205



Conclude  
1206

duvaltex

Panel | Acoustic  
Resolve 1301

Specifications

Content	100% post-consumer recycled biodegradable* polyester
Weight	16.0 ± 1.0 oz./lin. yd
Width	67" min. useable
Repeat	horizontal 12.7" vertical 32"

Cleaning Code

Standard Care Label W-S. Clean with water based cleaning agents, foam or pure, water free solvents. Vacuuming or light brushing is recommended to prevent dust and soil buildup.

**Bleach Cleanable** - May be cleaned with a 10% bleach-to-water solution. Rinse well after cleaning. May also be disinfected with hydrogen peroxide, alcohol, and quaternary ammonium (quat) based cleaners.

Miscellaneous

- Application testing of this product is recommended.
- Colors may vary between dye lots.
- This is a directional fabric.

Proudly woven in North America supporting our local communities.

Sustainability

BIODEGRADABLE\* CLEAN IMPACT TEXTILES™ address the daunting problem of how to deal with polyester fabric at the end of its useful life.

Biodegradable\* in landfill after 1,278 days (tested under ASTM D5511)

\*Rate and extent of biodegradation into elements found in nature is 91% after 1,278 days under ASTM D5511 (Anaerobic Biodegradation of Plastic Materials Under High Solids Anaerobic Digestion Conditions). The test was done with the same component (PET) polyester and biocatalyst additive. No evidence of further degradation.

**Guilford of Maine**  
A duvaltex brand

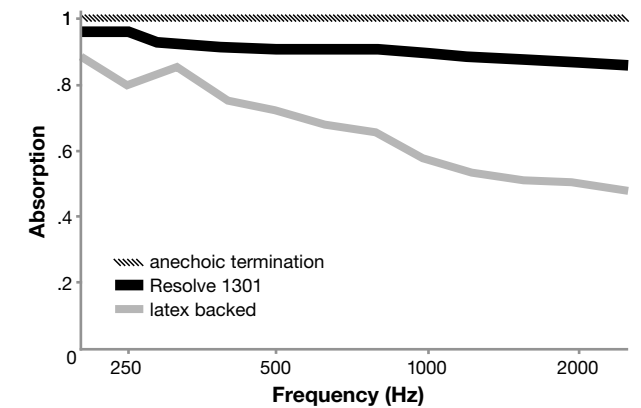
Performance

- Colorfastness to light (AATCC 16.3 Option 3)**  
Grade 4 min. at 40 hours
- Colorfastness to crocking (AATCC 8)**  
Grade 4 min. dry & Grade 3 min. wet
- Breaking Strength (ASTM D5034)**  
315 lbf min. warp and 405 lbf min. fill
- Flammability**  
ASTM E84 Class I or A

Acoustical Performance

The plot below summarizes impedance tube measurements of absorption of an anechoic termination and various fabrics in front of the anechoic termination.

Acoustical Performance for Panel Applications (ISO 10534-2)



NRC of anechoic termination	1.00
NRC of fabric in front of anechoic termination	.90

This pattern is included in the underwriters laboratory panel fabric recognition program. Additional testing of this U.L. recognized fabric is not required on approved panels from participating manufacturers.

USA & INTERNATIONAL  
Tel 800-544-0200  
Fax 616-554-2255

CANADA  
Tel 418 227-9897  
Fax 418 227-9899

For samples, visit [guilfordofmaine.com](http://guilfordofmaine.com)