

# Quietstone Finish

## *Spray-on Acoustical Surface*

### Quietstone Finish

Quietstone Finish is one of the best acoustic ceiling systems on the market, consisting of a recycled glass acoustic board and a beautiful white marble granular acoustic plaster finishing layer.

Applications for Quietstone Finish can be nearly any environment - a noisy restaurant, a loud bar, or an echo-filled office. Choosing the right acoustical environment is essential to clear communications, and is an important element for everyone.

**STOP NOISE**

**ACOUSTICAL | SURFACES, INC.**

**CELEBRATING 35 YEARS - SOUNDPROOFING, ACOUSTICS, NOISE & VIBRATION SPECIALISTS**  
952.448.5300 | 800.448.0121 | [sales@acousticalsurfaces.com](mailto:sales@acousticalsurfaces.com) | [www.acousticalsurfaces.com](http://www.acousticalsurfaces.com)



# Quietstone Finish

## Spray-on Acoustical Surface

### INTRODUCTION

Quietstone Finish is one of the world's leading seamless acoustic ceiling systems, with successful projects worldwide. The Quietstone Finish System consists of a beautiful granular acoustic plaster applied over Quietstone Compose panels, which are made from 94% recycled glass. The system can be applied to the ceiling area of nearly any room, where it will absorb sound and reduce reverberation. The system also offers thermal insulation and is perfect for modern architecture and traditional buildings alike, offering a clean, fresh appearance. This seamless acoustic ceiling is an ideal solution for theatres, schools, conference facilities and other spaces where good acoustics are important.

### PROPERTIES

Sound absorption properties which range from class A to D;  
Thermal conductivity of 0.08 w/mk;  
Thickness of system ranges from 30mm – 225mm;  
Range of finishes for our acoustic plaster - Color match and RAL colors are available.

### AREAS OF APPLICATION

- Theatres
- Schools
- Conference Facilities
- Modern architecture
- Traditional buildings
- Reception Areas
- Bars and Cafes

### INSTALLATION CONDITIONS

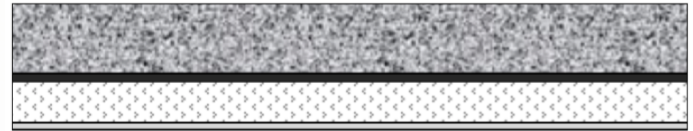
*Quietstone Finish system installation environment conditions must meet the following:*

- Ceiling must be either a concrete structure or a plasterboard structure
- Ceiling must be stable (no signs of cracking)
- Must be airtight
- Area of install must be accessible
- Room temperature must remain stable around the installation and drying time
- Installers must have access to ceiling areas without other construction workers blocking install areas

### SYSTEM PROFILES

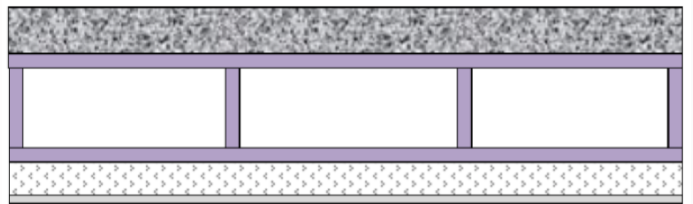
#### Class D Quietstone Finish 30

Concrete soffit, 2mm Quietstone adhesive, 25mm Quietstone board, 3mm acoustic plaster.



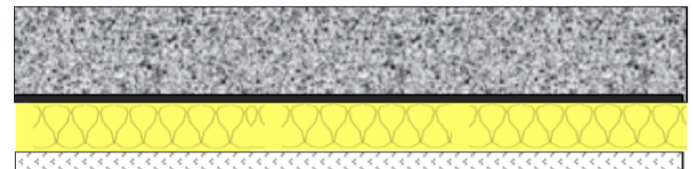
#### Class C Quietstone Finish 228

Concrete Soffit, 200mm suspended frame system with 300mm centers. The frame system creates a 200mm air gap, 25mm Quietstone Compose board, 40mm screws required to hold Quietstone Compose board to the frame system, 3mm acoustic plaster.



#### Class A Quietspray 55

Concrete soffit, 2mm Quietstone adhesive, 40mm Quietstone high density mineral wool, 10mm Quietstone Compose board, 3mm acoustic plaster.



**Test Reports & Additional Information Can be Found at:**

[www.acousticalsurfaces.com](http://www.acousticalsurfaces.com)



**ACOUSTICAL | SURFACES, INC.**

**CELEBRATING 35 YEARS - SOUNDPROOFING, ACOUSTICS, NOISE & VIBRATION SPECIALISTS**

952.448.5300 | 800.448.0121 | [sales@acousticalsurfaces.com](mailto:sales@acousticalsurfaces.com) | [www.acousticalsurfaces.com](http://www.acousticalsurfaces.com)