

SMS-SURF

Surface-Mounted Sound Masking Loudspeaker



The SMS-SURF is a 25-volt system loudspeaker designed to generate the optimum masking sound for surface-mounted applications. This sound masking speaker is equipped with a 6.5" (16.5 cm) driver installed in a sealed enclosure.

The SMS-SURF sound masking speaker must be installed on the surface of drywall ceilings or on ceiling tiles through a 8.6" (19.3 cm) diameter hole. Four different power taps (1/2W, 1W, 2W and 4W) controlled with a rotary switch allows quick adjustments of the output level. ROHS compliant.



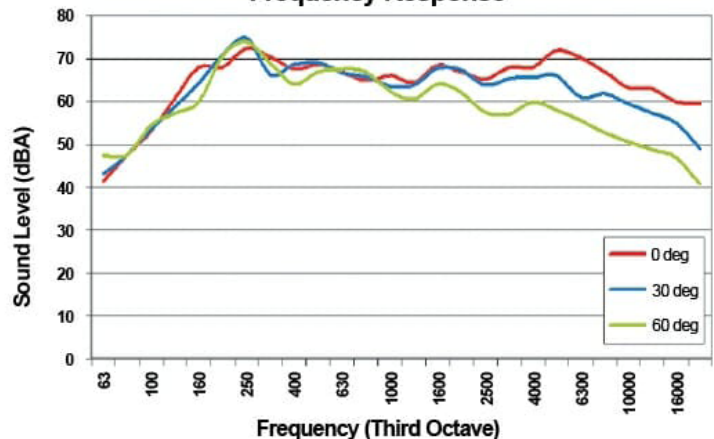
SPECIFICATIONS

1. Power: 10 watts
2. Line Voltage: 25V
3. Sensitivity: 88 dB
4. Material: ABS Fire Proof
5. Frequency Response: 100-8,000 Hz
6. Connectors: Spring Loaded Terminals
7. Color: White
8. Diameter: 8.75" (222 mm)
9. Height: 5.3" (125 mm)
10. Weight: 4 lbs (1.8 kg)
11. Shipping Weight: 4.4 lbs (2 kg)

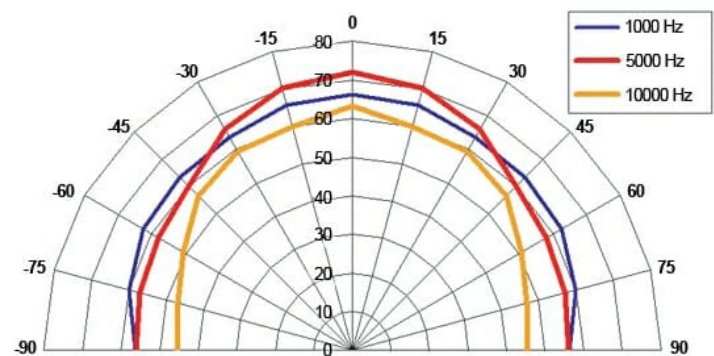
Test Reports & Additional Information Can be Found at:

<https://www.acousticalsurfaces.com/white-noise-system/surface-mounted-loudspeaker.html>

Frequency Response



Polar Response



ACOUSTICAL SURFACES, INC.

Celebrating Over 40 Years - SOUNDPROOFING, ACOUSTICS, NOISE & VIBRATION SPECIALISTS!

952.448.5300 | 800.448.0121 | sales@acousticalsurfaces.com | www.acousticalsurfaces.com